

The Ecology of Spirit

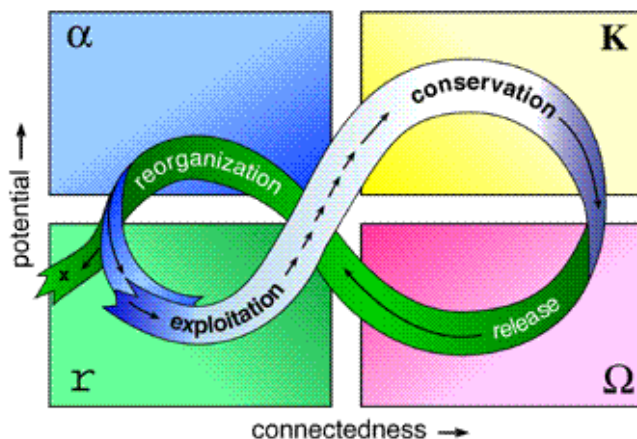
Evolution to Crisis and Beyond

There is a universal, natural process of development that applies to all living systems, human and otherwise. Its recent discoverers call it Panarchy¹, but it has been apparent to wisdom teachings for eons. It is a combination of gradual development, crisis, breakdown and reorganisation that produces a broken or stepped form of increase. When people are involved we have a natural tendency to resist the breakdown of our way of life, our economy, politics, society and way of thinking etc. However, it is the creative restructuring of these that lead us to greater achievements, and closer to the divine ideal.

Panarchy

The modern science of panarchy details the process where biological ecosystems go through cycles of growth, conservation, collapse, reorganisation and growth again (fig.1), at various geographic and time scales. The cycles are nested and overlap, having a mutual interaction between the larger and slower moving and the smaller and quicker cycles. A similar process can be seen in economies and civilizations, including human psychologies and cultures. The growth phase is one of rapid expansion of participants (e.g. species, people, ideas, resources), energy use, exchange, and connectivity. Within the constraints of the system it increasingly organises into efficiency patterns that exclude non-efficient players. Consequently, diversity and resilience decrease as the dominant efficiencies and specialisations increase, making a system brittle and vulnerable to collapse from unexpected shock. In an ecosystem this shock can be external, from drought, fire, flood, people etc, and in a human economy or civilization it can be either external, and/or internal such as from the cumulative effects of inadequate information, limited ideology, rampant greed and poor management. The 'r' quadrant in figure 1 shows the subsequent split into either a new growth phase or further degradation.

Figure 1. Panarchy Cycle



The more the system is interconnected, the faster its potential collapse. In today's global economy and ecology the rate of this interconnection has increased rapidly. The connections between human subsystems (economy, politics, culture, technology, education, etc.) and global life support systems have become critical. The *potential* for rapid global collapse has consequently increased. Collapse is a period of chaos and confusion that forces adaptation to a new cycle of growth and a new structure, or if

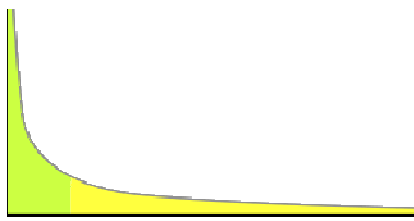
not successful to further devastating breakdown. In biology the new growth could be an expanding genus of exotic species following ecosystem collapse. In human development it could be a new start by a band of survivors following cataclysmic destruction of the old civilisation. This could occur if global economic and ecological cycles were to fail due to human mismanagement or extra-terrestrial energy surge impacts.

¹ Gunderson and Holling (eds), *Panarchy: Understanding Transformations in Human and Natural Systems* Island Press, Washington 2002. Further good treatment is in Thomas Homer-Dixon, *The Upside of Down*, Island Press, Washington, 2006, ch 9. A website where you can read the first chapter of Gunderson and Holling is www.resalliance.org/593.php. Key concepts and fig.1 above are at www.resalliance.org/1.php.

Power Law & Exponential Distributions

Most living systems exist in a state between order and chaos. In figure 1 above, the r and K stages of the ecological cycle are those of relative order, while the α and Ω stages are chaotic. Stability of order maintains a given system state, but is inflexible to major adaptation and change, i.e. to survival of significant change of conditions and subsequent progress. Severe chaos is too much change too quickly that cannot be organised for benefit. Therefore somewhere in between is essential for adaptation, meaning for survival of major changes and for further development. This is a cause and a consequence of evolution. The locus of a system of cycles can move over time from a preference for stable order to greater adaptation for change, so that evolution accelerates. This movement can be both gradual and fast, the latter leading to a phase shift to a higher order of comprehensiveness, adaptation and a new form of expanded stability. The size and frequency of these changes typically occur as a power law distribution (logarithmic scale on both axes, figure 2), or exponentially (figure 3). In both instances the many small changes will prepare the way for fewer larger changes.²

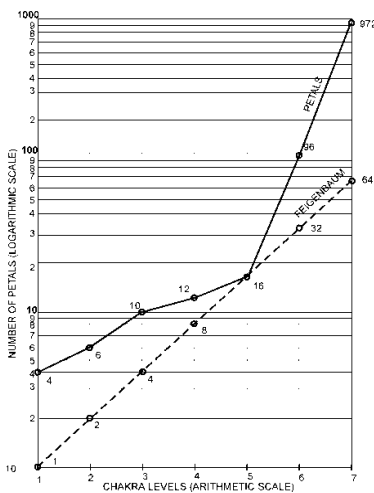
Figure 2. Power Law Distribution



The brain operates in the state between order and chaos, and the brain is the physical mechanism of the head chakras, especially the Crown. Research shows that the periods of both stability and change in the brain follow a power law distribution, and that this is true for all brainwave frequencies, being scale free. It also shows a correlation between its length of time in unstable adaptive

states and IQ.³ Assuming that improved intelligence is a valued developmental goal, this finding reflects the evolutionary movement from comparative inertia to adaptation. As the manifestation of the head chakras, brain dynamics should therefore reflect the dynamics of mind and soul. If so, then they should be reflective of the larger spheres of consciousness of greater beings, and of the mechanism of the unitary soul.

Figure 3. Number of Chakra Petals



For both the chakra stages of human development⁴ and the Mayan calendar periods, the locus of civilisation moves over time from long periods of stability to shorter and shorter periods of greater change and development. The process is fractal, in that the movement across the phases of a cycle follows the acceleration of change and development, and the movement within each phase follows the same pattern. This depicts the rapid expansion of awareness of civilisation in the later Mayan calendar stages, and the great expansion of consciousness at the higher chakras. The latter is shown numerically by the semi-logarithmic graph of chakra petals in figure 3, while the former conforms to an exponential decrease in Mayan calendar periods.⁵

² These distributions are ideal-typical and are influenced by human and other influences.

³ www.ploscompbiol.org/article/info%3Adoi%2F10.1371%2Fjournal.pcbi.1000314 , and *New Scientist*, 29 June 2009 (issue 2714), p.34-37.

⁴ The chakra stages are detailed in www.progressions.info, chapter 2.

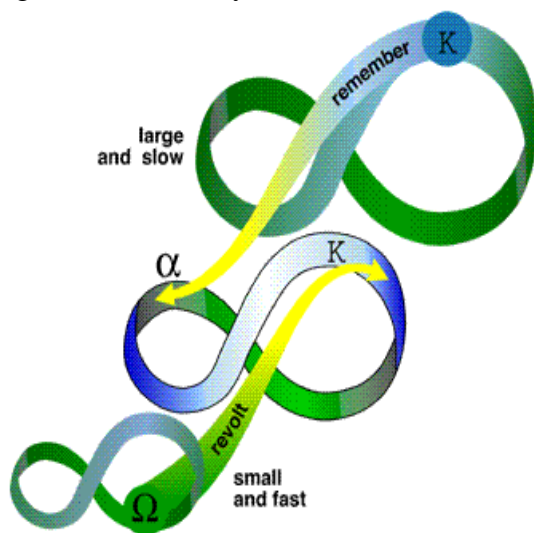
⁵ The calendar has 9 levels or periods, with each succeeding period being one twentieth the preceding period. This is equivalent to the straight “Feigenbaum” line in figure 3. The exponential expansion of consciousness and capability correlates with the number of chakra petals.

Periods of comparative stability allow the steady development of a system, be it an economy, intellectual paradigm or culture. Periods of instability and change allow radical restructuring, reorientation and a phase shift to a higher order of comprehensiveness and effectiveness.⁶ This process applies to all levels of being or frequency, to all chakra stages of awareness and manifestation. Hence we can expect it to apply, as above so below, to the higher realms of spirit and of cosmic lives. Scale-free, it is the manner of interaction between and within cycles of vastly different sizes.

As Above So Below

These technical details enable us to understand more fully how our human and natural Earth systems interact with the larger solar and cosmic systems. Panarchy captures the essence of this in its depiction of the nesting and overlap of cycles in figure 4 below.⁷ It shows the influence of the collapse (release or revolt) of a small cycle in bringing the collapse of a larger cycle. It also shows the influence of a yet larger cycle maintaining (or “remembering”) a successful environment that facilitates the reorganisation into new beginnings for the middle cycle. Consequently the three cycles combine to create progress, initially for the middle cycle but eventually, given their connection, for all.

Figure 4. Nested Cycles



The small cycle could represent humanity’s impact on the global management of Earth life systems. The middle cycle could be that of whole Earth ecology. The largest cycle could be of the life energy flows from solar system and galaxy. This is a geographical or spatial analogy, but we should also consider the analogy of planes of frequency and consciousness. For these the smallest cycle could represent that of developing human consciousness within a particular chakra stage. The middle cycle could be of the divine plan for Earth, and the larger could be of the solar god-like being’s evolution that includes Earth and humanity.

The nested cycles can also represent the interactive influences of spirit, soul and personality in human development, considered further below. This assumes that all forms of life and consciousness progress in cycles that contain periods of crisis and reorganisation. This is certainly the esoteric view given by the Tibetan master Djwhal Khul as follows:

“In the life of every disciple, particularly of those who face certain great expansions of consciousness, a *point of crisis* will come about. In that point of crisis, decisions are voluntarily or involuntarily made; having made them, the disciple then stands at a *point of tension*, with the decision behind him and the next step to be taken becoming clearer to his mental perception, and influencing his attitude to the future. When the work is done in the period of tension, then there comes what we might call the *point of*

⁶ Even in music, “For dissonance has a marked effect on the mental organism...it renders it more flexible, and so makes the thinker less conventionally-minded”, see Cyril Scott, *Music Its Secret Influence Throughout the Ages*, Aquarian Press, London 1958, p.60. Resonant frequency is the key here to influencing behaviour.

⁷ Panarchy cycle figures are from www.ecologyandsociety.org/vol9/iss1/art11.

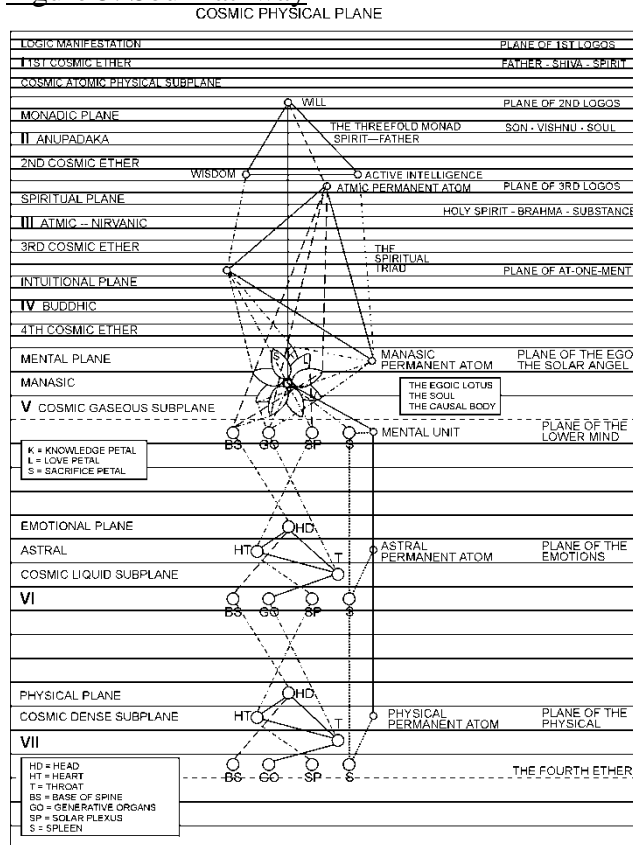
emergence. This is both an emergence from and also an emergence into a field of experience. The Christ Himself is no exception to this threefold experience...”
 “...there is nothing static in the entire evolutionary process of our planet or of the cosmos; there is naught but process and progress, a moving on, an increasing attainment and a mounting achievement. To this great law of the universe, even the Christ Himself is subject.” Source: AA Bailey *Letters on Occult Meditation* (p.68-70).

As within so without, and this applies to civilisations and to humanity as a whole.

Soul Applications

The linkages between the cycles of spirit, soul and personality as shown symbolically in figure 4, are detailed in figure 5 below.⁸ The personality comprises the planes of and below the lower mind, where the links between chakras and soul are marked. The soul exists on the three higher sub-planes of the mental plane, and the spiritual aspects of our nature are depicted by those planes above and linked to the soul. To give the bigger picture, all of this comprises the lowest (cosmic physical) plane of a much vaster cycle.

Figure 5. Soul Pathway



Human development follows an exponential pattern in mastering the seven planes of consciousness. There are seven major crises called initiations or revelations, that follow the acceleration of development as indicated by the Mayan calendar. These are depicted in figure 5 as the groupings of the seven chakras in the lower three planes, the chakras and the soul in the mental plane, and the trinity triangles in the higher planes. The many power law progressions within plane culminate in a crisis and great progression that jumps our awareness to the next plane. This process speeds up so that our comprehension and capability accelerate as we master the higher and more refined planes of our being.

In this process there is a feed-in of experience information from the lower nature to the soul, and a guidance and magnetic illumination from spiritual levels

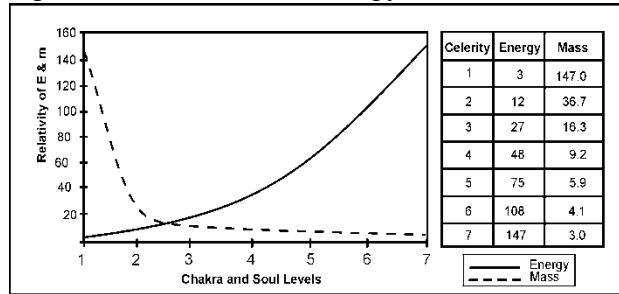
to soul and through it to the personality levels. In the early stages of our development the process is slow and the personality data far outweighs spirit influence. In the later stages the opposite occurs as spirit takes over and we expand and ascend with speed and purpose. This is an extreme and limited summary of the process yet gives the essence of it.

The relative contribution of the lower and higher natures over the seven major levels of consciousness is shown in figure 6. This uses the Einstein formula $E=mc^2$ in analogy to represent the relations between the divine trinity of spirit, soul and matter. In the formula, E

⁸ Source: AA Bailey, *A Treatise on Cosmic Fire*, Lucis Trust, London 1962, p.817.

is energy, which represents by analogy *spirit*, m is mass, representing *matter* or personality, and c is the speed of light, representing the *soul*. Symbolically, the soul is often associated with light. The different kingdoms of nature have a different number of petals in their base chakra, from 1 in the mineral kingdom to 4 in the human (and so on to the 7th kingdom), and these are used as soul quantum numbers in the formula.⁹ As a fractal structure, they also indicate the relative energy contribution in the seven human chakra stages of development.

Figure 6. Relative Soul Energy Levels



The spiritual relevance of figures 4, 5 and 6 is that the “downwards” flow is of the higher energy and awareness of spirit, which is the Dove or Shiva energy. The “upwards” flow of experience and transmutation of the material is

like food to the higher levels, and is ultimately the serpent kundalini or Eagle energy. Both contribute to soul radiance in the proportions given for the seven soul levels in figure 6. The changing soul energy is known as tithes in the Bible. At the end of the phase or cycle, the fulfilment of level 7, spirit dominates and brings the Shiva destruction of the old structures and the creation of a “new heaven and new earth”. The latter are the higher frequency material and spiritual aspects of a new cycle of development represented by the Ω and α stages of panarchy. The domination of spirit is essential for the transference of soul to a larger cycle of life. This is because Spirit is in all things, and when its light is freed from the bushel of materiality in the smaller entity, it shines forth and is magnetically attracted to the spirit life of the larger being and its cycle. This produces the integration of the uplifted soul into the larger entity and the dissolution of its lower substance that has served its purpose.¹⁰

Cosmic Cycles

The inference from figures 4, 5 and 6 is that there is a correlation between the spatial size of a cycle and the level of consciousness that ensouls it. This is so in the microcosm for the levels of human capability¹¹ and is a tenet of theosophy for the macrocosm. Within the grand life that ensouls a cosmic cycle there is a hierarchy and network of soul levels, all interacting with each other in the nature of panarchy (fig. 4). Each and every soul in its nested ecology must proceed through the growth, crisis, reorganisation and renewal cycle in order for the whole to evolve. All is ultimately guided by spirit, as the lower levels are progressively transformed into light.

There are a great many cosmic cycles, but two that have special relevance to Earth are the unusually strong alignment of fourth ray influences currently upon our planet and people, and the periodic pulsation of cosmic rays and plasma that impact our solar system and Earth. To these could be added the 11 year sunspot cycle that probably amplifies the effects of these larger cycles. Alice Bailey’s *A Treatise on Cosmic Fire* and Blavatsky’s *The Secret Doctrine* provide the information that our solar system is of the fourth order, and that we are now in the fourth scheme of the system, the fourth chain in the scheme, the fourth globe in the chain,

⁹ Details and reasoning are in www.progressions.info, chapter 7.

¹⁰ AA Bailey, *A Treatise on Cosmic Fire*, Lucis Trust, London 1962, p.1063-5.

¹¹ See the section on Jaques in chapter 5 in www.progressions.info. For a broader picture that includes biological development see chapter 9, section on the Self-Organising Soul Network.

and the fourth round of the globe.¹² These are the multiple cosmic alignments of the fourth principle that dramatically increase the power of the fourth ray upon our planet. The fourth ray is the Harmony Through Conflict ray, which generates and resolves conflict between pairs of opposites. It can stimulate progress and ultimately lead to better harmony for all. This especially affects the psyche of humanity, because it is the fourth kingdom which is itself governed by the fourth ray.

Our planetary Logos is undergoing the fourth initiation¹³ with a long term effect upon our fourth ray humanity. The fourth initiation is called the Renunciation or Crucifixion, and for people is about leaving behind the attachments to material life and ascending into the refined, wholist and enlightened ways of an adept. The fourth initiation stimulates the Heart chakra through the fourth ray. This middle chakra aims to integrate the three higher with the three lower chakras, enabling the spiritual to fully guide the material. When this happens at a Logoc level, the Heart chakras and fourth ray energies in humanity receive extra stimulation.¹⁴ They experience heightened energy of the conflict of opposites, including right and wrong, them and us, weak and powerful, yin and yang, spirit and matter that underlie the major problems of today. It is for this reason that Earth has been called the planet of pain and sorrow, its people living in the vale of tears caused by the mighty conflict of planetary transformation. It occurs at large and small scales, in many places and globally. Crises are met, and decisions made, resulting either in release into a better and more harmonious way of living, or in a regression into further pain and suffering until the lesson is learned.

In the cosmic superwave theory of Paul LaViolette,¹⁵ the Galactic Centre explodes every 13,000 years or so and sends a spherical wave of cosmic rays and plasma at near light speed throughout the galaxy. The evidence supports its effects on the solar system and Earth, such as the triggering of the beginning and ending of ice ages, and mass extinctions. The superwave pushes interstellar dust and comet debris into the solar system with a number of results. It increases solar activity, luminosity and flaring up to 1000 times current levels. There is evidence that huge solar flaring has scorched the surface of the Earth with high temperatures in the past, causing rapid melting of ice sheets, global flooding, and mass extinctions.¹⁶ The superwave with preceding gravity wave can also draw more asteroids into Earth's orbit, and trigger earthquakes, volcanos and tsunamis.¹⁷

A Galactic Core explosion cannot be timed precisely. Ancient observations of the stars in various civilisations record recurrent cycles of Galactic Core explosions that had devastating effects on Earth. An example with scientific support is an explosive outburst about 13,800BC. Antarctic ice core records of a large acidity peak then indicate extraterrestrial

¹² *A Treatise on Cosmic Fire* pp 360-363, 498 and *The Secret Doctrine* (Adyar Edition, Volume 1) p 207-235.

¹³ *A Treatise on Cosmic Fire* p 384. The 4th initiation is governed by the 4th ray, and according to Bailey the planetary Logos will achieve it in the next round, which could be a billion years hence.

¹⁴ It does not mean that all people go through the same process. It means that hundreds of thousands of humanity are now taking the *first* and later initiations, becoming soul infused personalities, overcoming the carnal nature of self-indulgence. See Alice Bailey, *The Rays and Initiations*, p 569-575.

¹⁵ See his website at www.etheric.com. Most of the predictions of the theory have come true, and it more effectively explains events than alternative theories. Scientific explanations are in the website.

¹⁶ For the theory's explanation of global warming oscillations in relation to ocean currents, regional temperature changes, Earth orbital changes and increases in greenhouse gasses, see the example provided in www.etheric.com/Downloads/TPI.html and the download link.

¹⁷ Paul LaViolette, *Earth Under Fire*. An explanation of electrical effects is in D Talbot & W Thornhill, *Thunderbolts of the Gods*, Mikamar Publishing, Oregon, 2005, and www.holoscience.com/synopsis.php. See www.holoscience.com/news.php?article=36uyr9nx for the connection between solar activity and earthquakes.

origin, probably from a superwave.¹⁸ We will know when the Galactic Core explodes because it will appear as a blue star visible day and night. A Hopi Indian legend says that when a hidden blue star appears, it will signify the end of one World and the beginning of the next World. The blue star also corresponds to the Egyptian Eye of Ra or Horus that sends fire to Earth to destroy most of its people. The Galactic Core “blue star” develops an oval surrounding and an inner “cornea” around the blue “pupil”, giving an appearance of a cosmic eye visible from Earth and sending divine destruction to its inhabitants.¹⁹

These two major cycles are examples of the influences of the larger lives upon our solar system and Earth. The ongoing 4th ray stimulates the conflict of the global crisis in order to work out a harmony. The superwave cycle provides the periodic energy and consciousness of powerful transformation. One prepares the way, and the other reaps the rewards of its work, positive or negative according to our understanding.

Decision Time

Where then are we, as a human race, in the panarchy cycles? The first half of the 20th century saw a major crisis of civilisation in the economic depression and world wars. These resulted in a breakdown of old social, economic and political rigidities, and the beginning of a more inclusive global concern in the second half of the century. There was a discernable movement to the Heart chakra with the creation of the United Nations, welfare policies, the Marshall Plan and Colombo Plan beginnings of development assistance, and the roll-back of political imperialism. Within the power law distribution of human crises this was a major change but not yet a globally transforming one. We are approaching that now with the looming problems of being able to live in harmony with each other and with nature on this planet.

The problems seeking our solution include political violence, the rich-poor divide, destructive economic growth, a diminishing resources-to-population ratio, causes and effects of climate change, and increasing competition for energy supplies, water and food. For example after peak oil, when it declines, the demand for oil will continue to rise from major users such as the USA, Europe, China, India and Japan. The competition will not be just commercial, but will include political and in some cases military actions, as in the Middle East now. China, India and Japan are currently increasing their military capacity. Unregulated economic growth is driving pollution and rapid depletion of resources as the world population increases. It is estimated that for all Chinese to live at the same standard as the USA will require the resources of more than six planet Earths to support it under current conditions. Our *one* planet’s carrying capacity under present conditions clearly cannot do this for all, so something has to give. Normally we would look to technological change to ease the way. However, the slow rate of change and the “efficient” corporate capture of technologies have led to some rigidity that stifles the needed rate of technological evolution and adoption.

How we manage this major global crisis is being closely monitored by the higher kingdoms, by the masters and divine beings that we interact with. In the large panarchy cycles, they include our neighbours from other star systems. We “feed into” and influence their cycles. How we deal with our next global challenge will determine how they respond. They will assist us if we make the effort and seek their help. They know that we are all interconnected and ultimately on the one path of enlightenment and evolution.

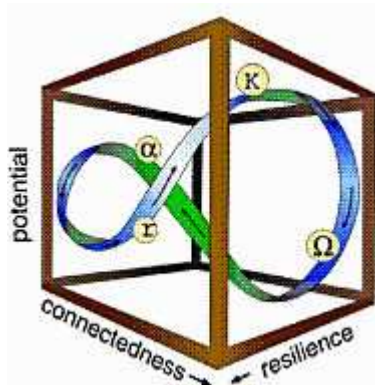
¹⁸ See www.etheric.com/Downloads/solar.html and the download link, also www.etheric.com/LaViolette/Predict.html. Details are in LaViolette, *Earth Under Fire*.

¹⁹ LaViolette, *Earth Under Fire*, p.71-76, explains the cosmic physics of the eye’s appearance.

Our Role

We are entering into a time of global crisis and need for renewal that will affect every person on Earth. It is clear that continuing unchanged in our political, economic and social behaviour will lead to ongoing catastrophes and a degraded way of life for all. The world is no longer disconnected in its various regions and activities. We are all increasingly connected in many ways, from the physical to spiritual levels. This rapid growth of connectivity allows a greater synchronisation of panarchy cycles that makes large and sudden changes possible. As a consequence of this “efficiency”, global systems lose resilience, becoming more rigid and fragile. Figure 7 illustrates the increase in resilience as a consequence of the Ω and α phases. A shock to the system could create a fast cascading collapse of existing structures. However, it could also encourage a cascading spiritual upliftment and inspiration for those open to higher level guidance.

Figure 7. Change in Resilience



The Tibetan says that the energy of the Heavenly Man will destroy forms of the lower three sub-planes prior to building anew. This energy will also have a constructive effect on the four higher sub-planes, having a discriminating effect for physical transformation.²⁰ This applies to nature and to people, as gradual transmutation and as sudden large changes. This is how the kundalini works in the body, by burning the dross and elevating the consciousness. The “destruction” of the three lower levels (physical, emotional and lower mental) is symbolised as sacrifice (making sacred), in which burnt offerings are made to the gods. This means that the material nature is transformed by “fire” to ethereal or spiritual essence.

The oldest known written book puts it this way:

“When the Gods smelled the sweet savour, they gathered like flies over the sacrifice”²¹
The savour is the “food” or redeemed substance energy and consciousness that contribute to the higher cycle life and awareness. It is also known as tithes in the Bible, and it is an essential dynamic of evolution into greater lives. It is a form of invocation that evokes the higher response of enlightenment and upliftment for mutual benefit. When we consciously take part in this process, we speed the conflict (the burning) that clarifies the crisis and we hasten its resolution into harmony.

Within the power law distribution of changes, there must inevitably be a major transformation of civilisation, including the dawn of a new root race on Earth. According to the Book of Revelation²², there are two “reapings”, of earth and of grapes. Earth represents the lower nature (3 lower sub-planes) and grapes represent the higher nature (4 higher sub-planes). The grapes were cast into the winepress, which creates wine, or blood, which is the divine life and wisdom through the evolutionary process.²³ This suffuses the lower nature so that the higher nature controls the lower. The ripe grapes also symbolise those people who have developed the love-wisdom nature, while earth is symbolic of those people who have potential but are not yet fruitful. Both need different treatment by the higher powers.

²⁰ AA Bailey, *A Treatise on Cosmic Fire*, Lucis Press, London 1962, p.467. The “sub-planes” are fractal, and are therefore of each plane and sub-plane depicted in figure 5 above.

²¹ *The Epic of Gilgamesh*, Penguin Books, 1960, p.108. The Bible is also replete with similar symbolism of smoke and burning.

²² Chapter. 14, verses 15-20.

²³ See www.progressions.info, chapter 8, for details of the symbolism of *Revelation*.

Our role in this, if we are aware of the process, is to invoke the divine response from the higher planes of being. We do this by prayer, meditation, visualisation and specific invocations of love and light. We also do it by our daily thoughts, feelings and behaviour towards ourselves and others. In doing this we recognise that we are part of a greater life and cycle that responds to our presence and activities. We work together to improve the whole. This brings a series of small improvements in living, though it can also increase the disparity between the more enlightened and those still in the throes of inertia. It prepares the way for a very major change, that is always initiated from the celestial realms when we are ripe for it.

The Tibetan master says that the periods in a cycle that are most important are the end or overlapping times. These are times of chaos, and affect the lower or physical levels through revolutions, cataclysms and upheavals. We are currently in an end period of developing chaos, and it is at this time that there is a great need for effective meditation and invocation.²⁴

Celestial Role

We live within vast dynamic energy fields in the cosmos that provide the essential life and consciousness for our sun and Earth. Our solar system is an aware cell in the larger being. Just as the human body has its cycles and rhythms, so do celestial lives. Their rhythms are typically on a much vaster scale than ours, with cycles affecting Earth evolution ranging from thousands to billions of years.

Figure 8. Mass Extinctions

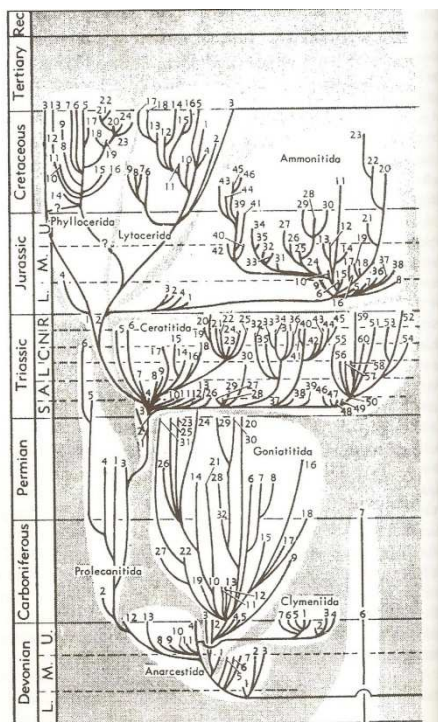


Figure 11.1. Phylogeny of the order of Ammonoidea (sea ammonites) showing the rapid appearance of new families following events of mass extinction (Teichert, *Essays in Paleontology and Stratigraphy*, p. 198.)

The energies involved in these large cycles are much greater than those of solar system astrology. However, in each case there is a range of effects from the psychological and social to medical and physical. The large celestial cycles immensely scale-up the effects so that major Earth changes are inevitable, and evident in history.

Esoteric communications indicate that many of these effects upon us are mediated by our global human consciousness. We can moderate or exacerbate their impact. Fortunately, in the modern world more and more people are opening to the higher influences, and are seeking to cooperate with them to create a better world.

There are a number of possible types of high energy impact on our solar system and Earth. However, a physical impact by a large asteroid has a very low probability. A wave of cosmic rays and interstellar dust would greatly energise our sun and have a major impact on Earth. There is hard evidence for this in Earth's history from ice core records.²⁵ Softer evidence is in the form of

²⁴ AA Bailey, *Letters on Occult Meditation*, Lucis Trust, 1950, p.39-43. An esoteric aspect of the current difficulties is the change from the predominance of the 6th ray of devotion to the 7th ray of order and organisation in influencing humanity. This current turbulence could last some hundreds of years.

²⁵ LaViolette, *Earth Under Fire*, on p.321 says "In summary we find there are four principal cycles that may strongly influence the evolution of terrestrial life: the thirty million-year cycle of the Sun's oscillation through

old myths and stories of great Earth cataclysms. LaViolette estimates that there is a 90% chance that we will receive a galactic superwave within 400 years.²⁶ This energy influx would create a phase change for human civilisation. In the past this kind of periodic impact has strongly influenced ecological development through destruction of some species and enhancement of others, and figure 8 illustrates this punctuated form of evolution.

Integration

These extreme energies that create major transformations of civilisation are one form of celestial influence. There are more gentle yet potent forms in the ongoing astrological stimulation of life. All aim to encourage the growth of love, wisdom and divine purpose in our lives. We are part of the larger lives and our energies and consciousness interact with them, are part of their energies and consciousness. We are a part of the basis for their further development, which requires our ascension and further integration into the larger life. We are evolving into a far more comprehensive understanding that will eventually become our aware integration at soul levels. This integration is with the higher kingdoms on Earth, and with civilisations in various dimensions in the cosmos. However, certain inspired qualities of consciousness are essential before we can “ascend” to these levels. While bearing in mind our intimate connections to the higher realms, and our use of their energies and inspirations, we need to focus on the next steps to be taken here and now. In successfully transforming ourselves and our culture, we lay the foundation for alignment with the higher realms. This will bring greater assistance from the masters and others that will accelerate our progress.

In panarchy crises are inevitable, but the timing and severity of them for the present world conditions are uncertain. What is certain is that they bring change and that we can influence the nature of the change. In the process, the lower aspects of our nature will be transformed and the higher aspects enhanced. By working with the wisdom of the beings of the higher cycles we can ensure continuity of progress. This inevitably means the destruction, or leaving behind, of older and more limited ways of living. We can prepare for the inevitable by our awareness and invocation of inspiration and its manifestation in our lives. We can help create our future, but in the true ecological sense in cooperation with all kingdoms of being and all cycles of life. This is the true world challenge now.

The Key

A final perspective:

“The wisdom and love of All is still with us. It always has been. We are one with the All, in our hearts and in the essential spark of life that we are – sparks from the heart of God, alive and with all of the potential qualities of God evolving. What else do we/you need to know? That we are all one is given, yet how many of us realise it, and more powerfully, live it? This is important, this is the key. Find it in your heart and live it. No more need be said.”

the galactic plane, the 23,000-year seasonality cycle, and the Galactic core explosion cycle, which repeats every 13,000 to 26,000 years and possibly contains an additional 100,000-year cyclic regularity.

²⁶ The Tibetan also says; “Christ...has foreseen this "time of the end," with its planetary catastrophes, phenomenal disasters, despair and invocation—arising from both the East and West. He knew that in the time of final crisis and tension, humanity itself would force His emergence.” - AA Bailey, *The Reappearance of the Christ*, p.100, and “Cataclysms of a worldwide nature will occur during the next one thousand years; continents will be shaken; lands will be raised and submerged” - *A Treatise on Cosmic Fire*, p.467.